



MONTHLY MEMBERSHIP PROGRESS REPORT

District 202 J

Results as of: 02/28/2019

GMT: CLIFFORD HEYWOOD

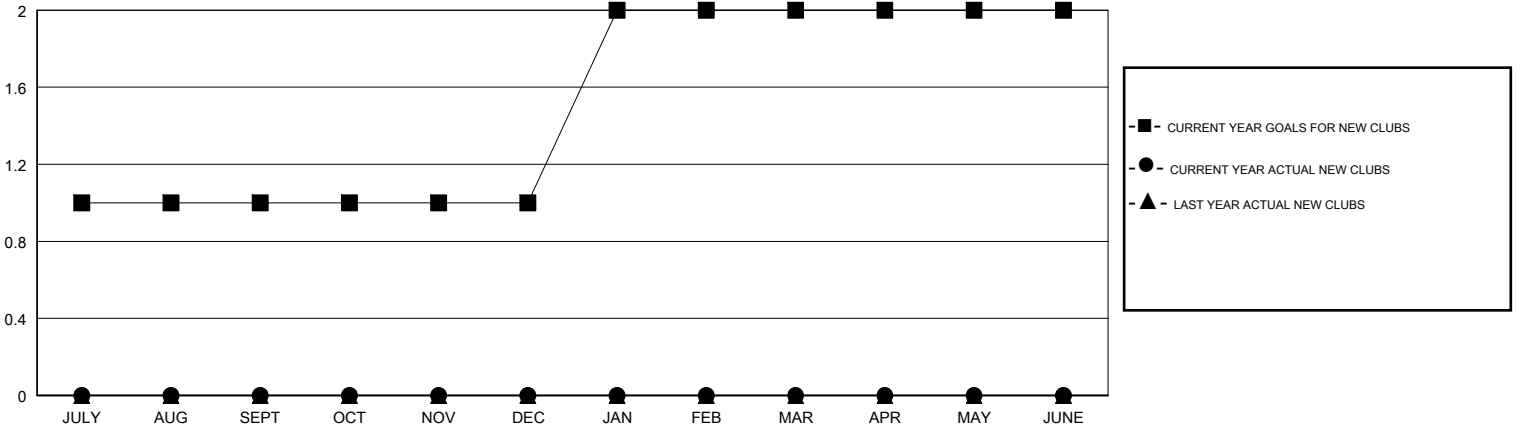
LOCATION NEW ZEALAND

GMT CA

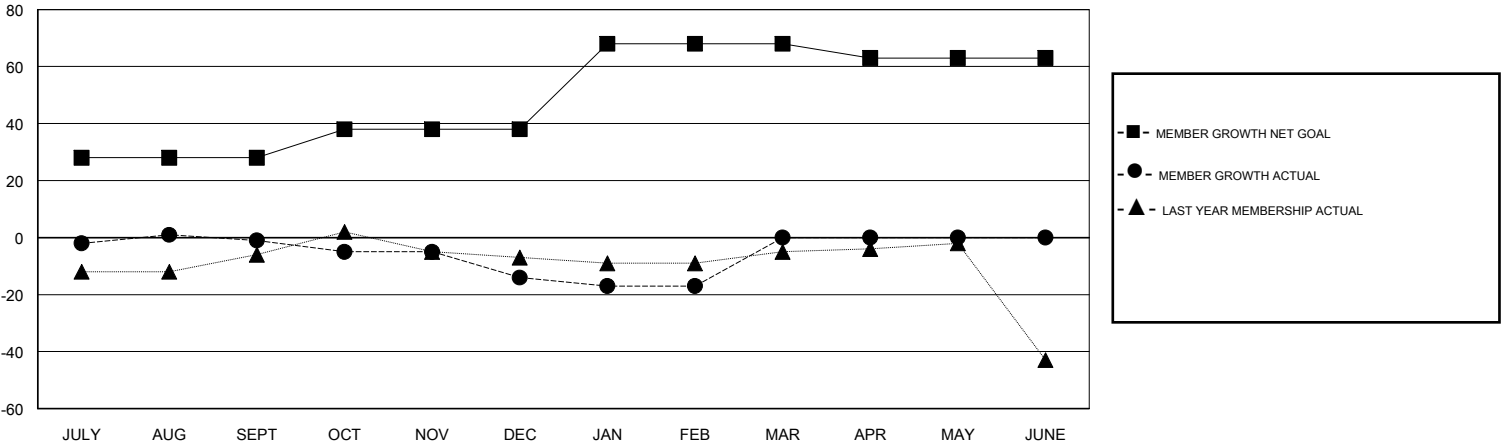
Clubs			
RESULTS FOR 2018-2019			
QUARTER	NEW CLUB GOAL	NEW CLUBS	DROPPED CLUBS
JULY/AUG/SEPT	1	0	1
OCT/NOV/DEC	0	0	0
JAN/FEB/MAR	1	0	2
APR/MAY/JUNE	0	0	0

Members			
RESULTS FOR 2018-2019			
QUARTER	MEMBER GROWTH NET GOAL	MEMBER GROWTH ACTUAL	DROPPED MEMBERS ACTUAL (including transfers)
JULY/AUG/SEPT	28	25	19
OCT/NOV/DEC	10	12	24
JAN/FEB/MAR	30	11	9
APR/MAY/JUNE	-5	0	0

GOALS AND ACTUAL NEW CLUBS CUMULATIVE



GOALS AND ACTUAL MEMBERS CUMULATIVE



DROPPED CLUBS: 3

17 CLUBS OF 38 ADDED 1 OR MORE NEW MEMBERS

GENDER DISTRIBUTION	
MALE	950 (76.74%)
FEMALE	288 (23.26%)
Women Percentage Fiscal Year Goal: 25%	

DROPPED MEMBERS	
DECEASED	14
CLUB CANCELLED	0
OTHER	38
TOTAL	52

[CLICK HERE FOR CUMULATIVE MEMBERSHIP DATA](#)

TOTAL FAMILY UNIT MEMBERS	48
FAMILY MEMBERS PAYING HALF DUES	24